



CTE Coffee & Conversation

Career & Technical Education Leader PLN

August 25, 2022 | 10:00 a.m.



Agenda

- TEA Updates
 - 2023 Accountability Reset Public Comment
 - TSIA Reimbursement
 - PEIMS Reports to review
 - Current Information & Changes
- IBC Update
- Non Discrimination Statement Update
- Breakout & Discussions
- Upcoming Leader Meetings & Professional Learning





TEA Updates

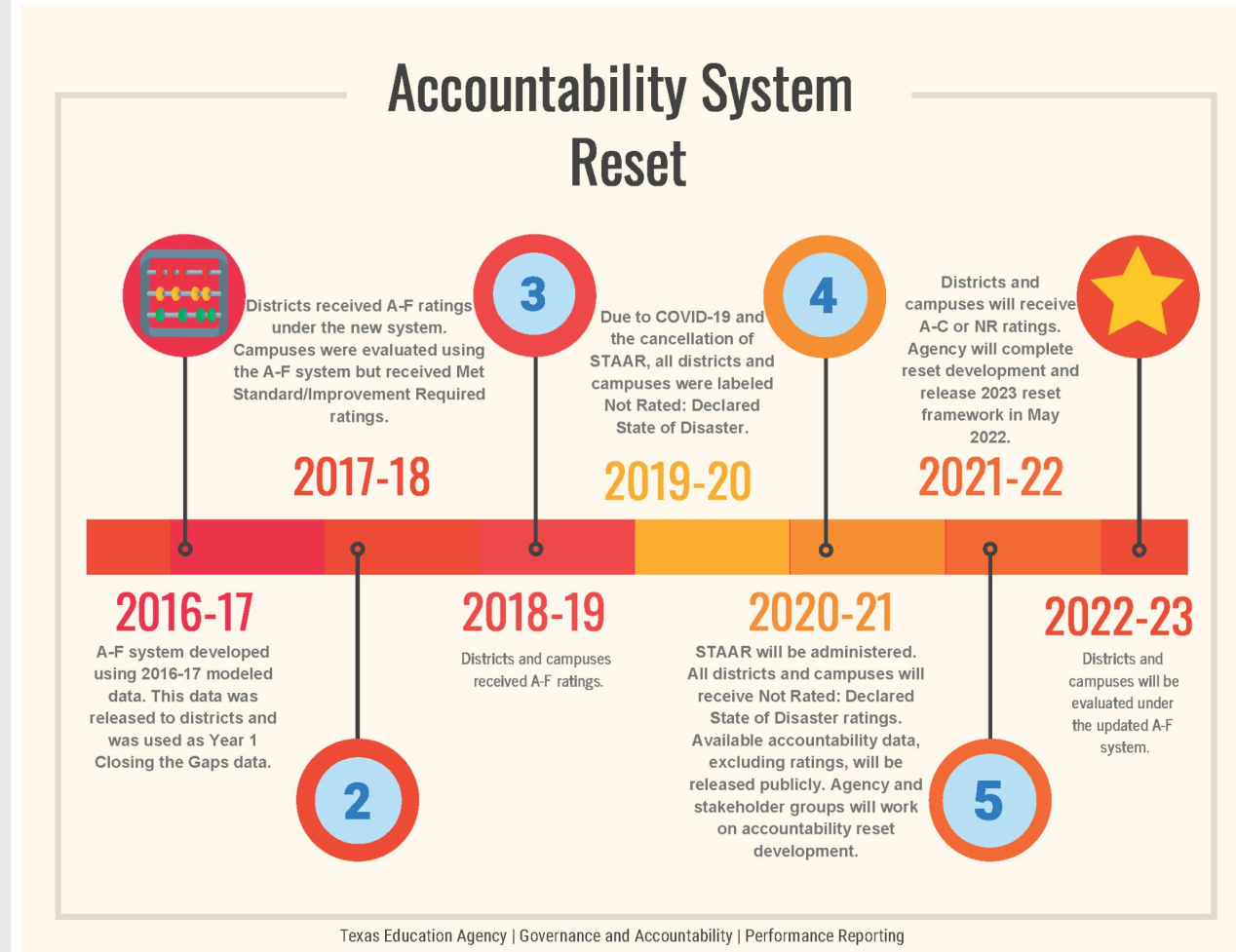


2023 Accountability Reset: Public Comment Closing October 1st!

Proposal

- Have you reviewed the proposed changes?
- Have you assessed internally how this would have affected your Class of 22 graduates?

Public comment submission:
performance.reporting@tea.texas.gov



TSIA Reimbursement:

[This letter](#) details processes and procedures for districts and open-enrollment charter schools regarding the request for TSIA reimbursement as authorized by House Bill 3 (HB 3) of the 86th Legislative Session, 2019.

Included below are the processes and procedures for the submission of the TSIA reimbursement request.

Timeline:

- On **July 7**, TEA will open the window for school systems to submit a **Qualtrics form** with the required data to request their TSIA reimbursement.
- This window will close on **September 30, 2022**. TEA **will not accept late requests**.



Updated PEIMS Reports

**Time to review
our data!**



- PDM3-120-013** Special Programs Attendance Data
- PDM3-130-001** Superintendent's/Principal's Report of Student Attendance
- PDM3-130-002** Superintendent's/Principal's Report of Career and Technical Education Eligible Days
- PDM3-130-005** Comparison of Current Year and Prior Year Attendance
- PDM3-130-006** Campus Attendance Diagnostic Messages
- PDM3-130-008** Superintendent's/Principal's Summary Report of Student Attendance
- PDM3-130-009** Attendance by District of Residence

PEIMS Coding/CO22 Chart

Q: Will Chapter 130 courses that moved to Chapter 127 change PEIMS codes?

A: "At this time, Curriculum is not planning on renaming the PEIMS codes. This decision was made through the ITF committee, which is made up of district leaders and PEIMS personnel within districts and ESCs. They felt it would be more disruptive to their systems to continually change course codes, rather than just realizing Chapter 130 may be housed in 127."





Industry Based Certification Update

Changes

TEA RELEASED NEW LIST AND SUNSETTING DETAILS 8.18.2022

- TAA: [Industry-based Certifications](#) Updated August 18, 2022
- [2022-24 Industry-Based Certification List for Public School Accountability - Current \(PDF\)](#)
- [2019-22 Industry-Based Certification List for Public School Accountability - Sunsetting \(PDF\)](#)
- [Power Point Slides Explaining changes and sunsetting process](#)





ESSER Funds & CTE



CTE and CCMR

EDUCATION SERVICE CENTER
REGION 11

ESSER III & CTE

ESSER Funding Allowability

- Unprecedented amounts of federal grant funds to districts and charter schools
- ESSER I – supplanted by state; expended already
- ESSER II – partially supplanted by state; districts have funds to expend
- ESSER III – district has total discretion on use of funds
 - ✓ 20% required for addressing learning loss including academic, social emotional, and mental health needs of students and staff

ESSER I	ESSER II	ESSER III
\$1.2B	\$5.5B	\$12.4B



ESSER III & CTE

ESSER Grants Documenting Allowability

LEA must justify uses of funds and document for auditor

- Reasonable and necessary cost
- Aligned with intent of ESSER statute
 - to prevent, prepare for, or respond to the COVID-19 pandemic, including its impact on the social, emotional, mental health, and academic needs of students
- Aligned to statutorily allowable use of funds
 - One of the allowable uses on pp.10-12 at <https://tea.texas.gov/sites/default/files/esser-side-by-side.pdf>



ESSER III & CTE

Aligned to Intent of ESSER Statute

Consider...

- Is the activity in response to the pandemic? Meeting county health or CDC recommendations?
- Was the need caused or exacerbated by the pandemic?
- Is space needed for social distancing?
- Is there a need for more manipulatives so you don't have to stop and disinfect in the middle of class in between student uses?
- Are you doing more computer-based instruction?



ESSER III & CTE

Selected Allowable Uses of Funds

Aligned to statutorily allowable use of funds

- Any activity authorized by the ESEA (includes construction under Impact Aid Program)
- Any activity authorized by the Carl D. Perkins Career and Technical Education Act of 2006 (Perkins V)
- Activities to address the unique needs of low-income children or students, students with disabilities, English learners, racial and ethnic minorities, students experiencing homelessness, and children and youth in foster care, including how outreach and service delivery will meet the needs of each population

TEA

ESSER III & CTE

Perkins Uses of Funds

1. To support the implementation and sustainability of statewide and approved regional programs of study.
2. To involve parents, businesses, and labor organizations as appropriate in the design, implementation, and evaluation of career and technical education programs.
3. To provide career and academic counseling.
4. For local education and business partnerships.
5. To provide programs for special populations.
6. To promote and support career and technical student organizations (CTSOs).
7. For mentoring and support services.
8. For leasing, purchasing, upgrading, or adapting equipment.
9. To develop and expand postsecondary program offerings.
10. To develop initiatives that facilitate the transition of CTE students into postsecondary education technical programs.
11. For improving or developing new CTE courses.
12. To develop and support small, personalized career-themed learning communities.
13. To provide CTE programs for adults and school dropouts to complete their secondary school education or upgrade their technical skills.
14. To provide assistance to individuals who have participated in CTE programs in continuing their education or training or finding an appropriate job, such as through referral.
15. To support training and activities (such as mentoring and outreach) in nontraditional fields.
16. To pool a portion of such funds with a portion of funds available to not less than one other eligible recipient for innovative initiatives.
17. To support other CTE activities with the purpose of the Perkins V act.

ESSER III & CTE

Selected Allowable Uses of Funds

Aligned to statutorily allowable use of funds

- Purchasing educational technology (including hardware, software, and connectivity) for students who are served by the LEA that aids in regular and substantive educational interaction between students and their classroom instructors, including low-income students and students with disabilities, which may include assistive technology or adaptive equipment
- School facility repairs and improvements to enable operation of schools to reduce risk of virus transmission and exposure to environmental health hazards, and to support student health needs



ESSER III & CTE

Selected Allowable Uses of Funds

Aligned to statutorily allowable use of funds

- Developing strategies and implementing public health protocols including, to the greatest extent practicable, policies in line with guidance from the CDC for the reopening and operation of school facilities to effectively maintain the health and safety of students, educators, and other staff.
- Other activities that are necessary to maintain the operation of and continuity of services in the LEA and continuing to employ existing staff of the LEA.



ESSER III & CTE

Federal Rules on Construction; May 26 Guidance

Uniform Grant Guidelines (Regulations)

34 CFR 76.600, 75.600-75.618

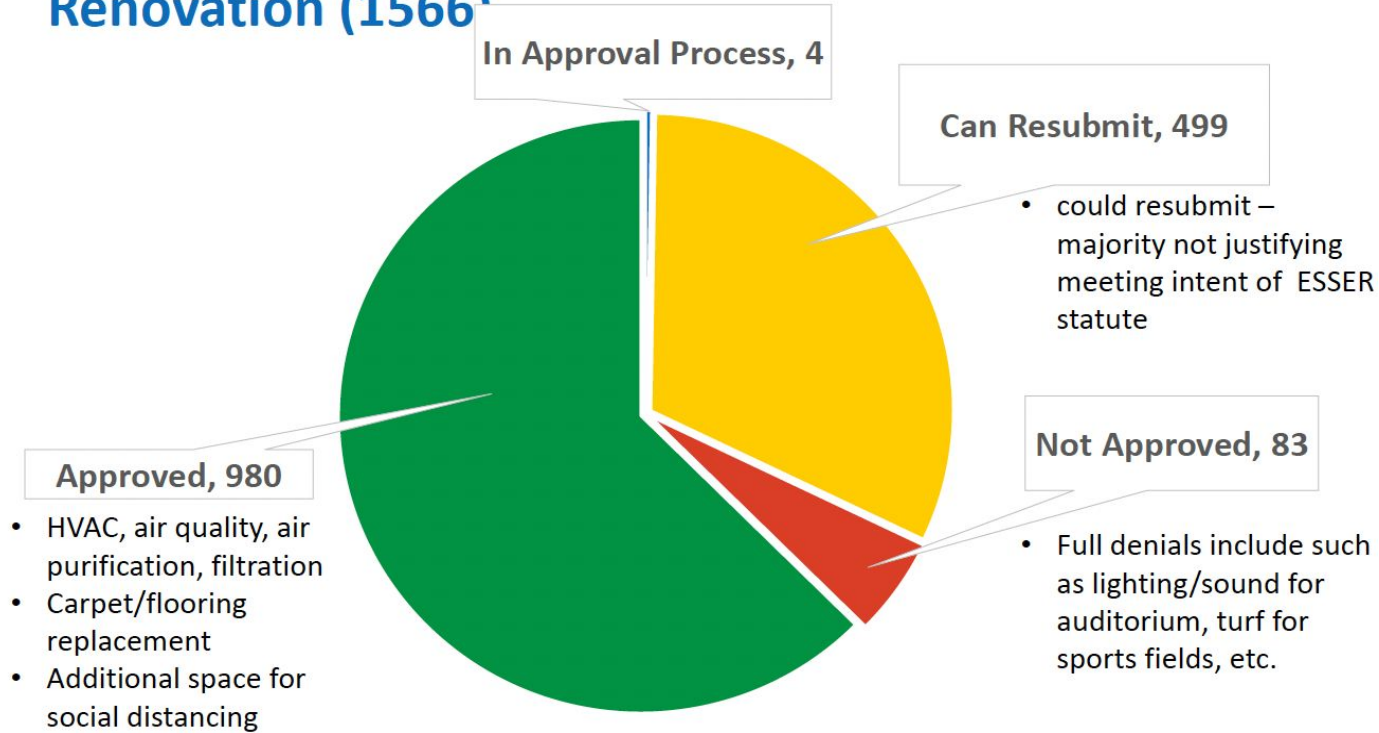
- Environmental impact assessment
- Effect re: National Register of Historic Places
- Title or interest to ensure use and possession of facility for 50 years+
- Project approved before bidding
- Reasonable timeframe for project completion
- Functional, economical, and not elaborate in design
- Meet federal, state, and local health and safety standards
- Sufficient operating funds to operate and maintain facility

Davis-Bacon Act, if over \$2000



ESSER III & CTE

Texas Prior Approval Requests for Construction or Renovation (1566)



ESSER III & CTE

CTE Related Approved Construction/Renovation Projects

1. Remodel/Reusing Pre-Existing Space for Classrooms/Labs/Multipurpose Spaces
2. Network Upgrade
3. Outdoor Areas/Canopies
4. Window/Door Upgrades and Replacements
5. Improvements to Pre-Existing Facilities (Indoor and Outdoor)
6. CTE Building Construction (Ag Shop/Welding Facility/Greenhouse)



ESSER III & CTE

Next Steps

1. Review your district's ESSER III required plans, they are posted on your district website
 - a) Return to In-person Instruction and Continuity of Services Plan, and
 - b) LEA Use of Funds Plan
 - c) Note: Only ESSER III required these plans.

2. Ask if ESSER II or III funding is still available
 - a) Many LEAs were unable to hire staff this year that they had planned for, and are looking to reallocate funds

ESSER III & CTE

Next Steps

3. Do your homework to complete the justification form
 - a) Research the reasonable cost for what you are asking
 - b) Document the allowable activity in statute that aligns to what you are asking
 - c) Document the alignment of what you are asking to the intent of the ESSER statute
 - i. How is the need related to, or increased by, the COVID-19 pandemic
 - ii. Include added space for social distancing, as applicable
 - iii. Include more equipment so fewer students sharing, as applicable
 - iv. Include any industry certifications involved, as applicable
 - v. Include info on jobs lost in the specific area or career areas
 - vi. Include any parent or community training, as applicable
4. Submit your request to your district



ESSER Resources

General ESSER Resources:

<https://tea.texas.gov/finance-and-grants/grants/elementary-and-secondary-school-emergency-relief-esser-grant-programs>

To find your district's allocation amount:

<https://tea.texas.gov/finance-and-grants/grants/grants-administration/applying-for-a-grant/entitlements>

Look under the “ESSER” section, specifically CRRSA ESSER II and ARP ESSER III.

ESSER Side-by-Side Requirements:

<https://tea.texas.gov/sites/default/files/esser-side-by-side.pdf>

pp. 10-12 show the allowable activities list

Form to document ESSER activity allowability:

<https://tea.texas.gov/sites/default/files/esser-allowable-uses-of-funds.pdf>

Pre-approval form for Construction, Remodeling, Alterations, Renovations, and Repairs:

<https://app.smartsheet.com/b/form/9f5a97dce18b4918ac92a7f291de3e01>

ESSER Frequently Asked Questions:

<https://app.smartsheet.com/b/publish?EQBCT=f4b5d82938764f1f81573845021e58ed>

Perkins Allowable Uses, pp.18-23:

<https://tea4avcastro.tea.state.tx.us/eGrants/21-22/22420006/Perkinsproguide.pdf>

ESSER III & CTE:

- COVID Recovery ESSER Planning Template ([Excel](#) and [accessible PDF](#)). This template is not a mandatory tool but an optional one you may use to align your funding plan to your LEA learning acceleration strategy.
- [Justification/Documentation of Allowable Use of ESSER Funds](#): Complete this form to document activities funded with ESSER grant funds. The form is maintained locally and provided to TEA only upon request.



ESSER Contact Information

Cory Green

**Associate Commissioner and Chief
Grants Officer**

Texas Education Agency

(512) 463-8992

GrantSupport@tea.texas.gov

cory.green@tea.texas.gov

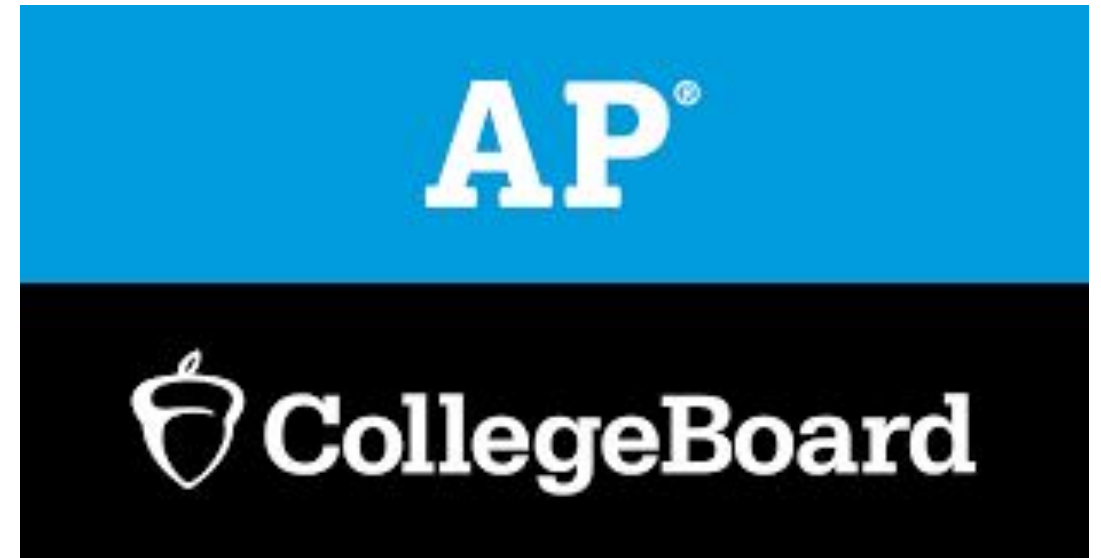
Serving in a “Dual Role” that includes AP Coordinator?

Don't miss out on these
resources!

[Back-to-School Workshop for AP
Coordinators](#)

[Join the Online AP Coordinator
Community](#)

[Chat with a Coordinator](#)





Annual Non-Discrimination Statement Update

Title VI Update

[Have you updated your Non-Dis Statement? Printed
and Digital?](#)





Fingerprinting for Education & Training

Consider this for Instructional Practices!

Safety/Security. Student Ownership.



Questions or Discussion Points?

Time for Networking!

This PLN is for YOU!



CTE and CCMR

EDUCATION SERVICE CENTER
REGION 11



Upcoming Leader Meetings

9/22/22 9:00am

[Registration Link](#)



ESC Region 11 CCMR and CTE Leader Meetings 2022-2023

- August 25, 2022
- **September 29, 2022**
- October 26 & 27, 2022
- November 10, 2022
- December 1, 2022
- January 12, 2023
- February 23, 2023
- March 23, 2023
- April 18, 2023
- May 18, 2023
- Register for all here: <https://registration.esc11.net/catalog/sessions/29751>

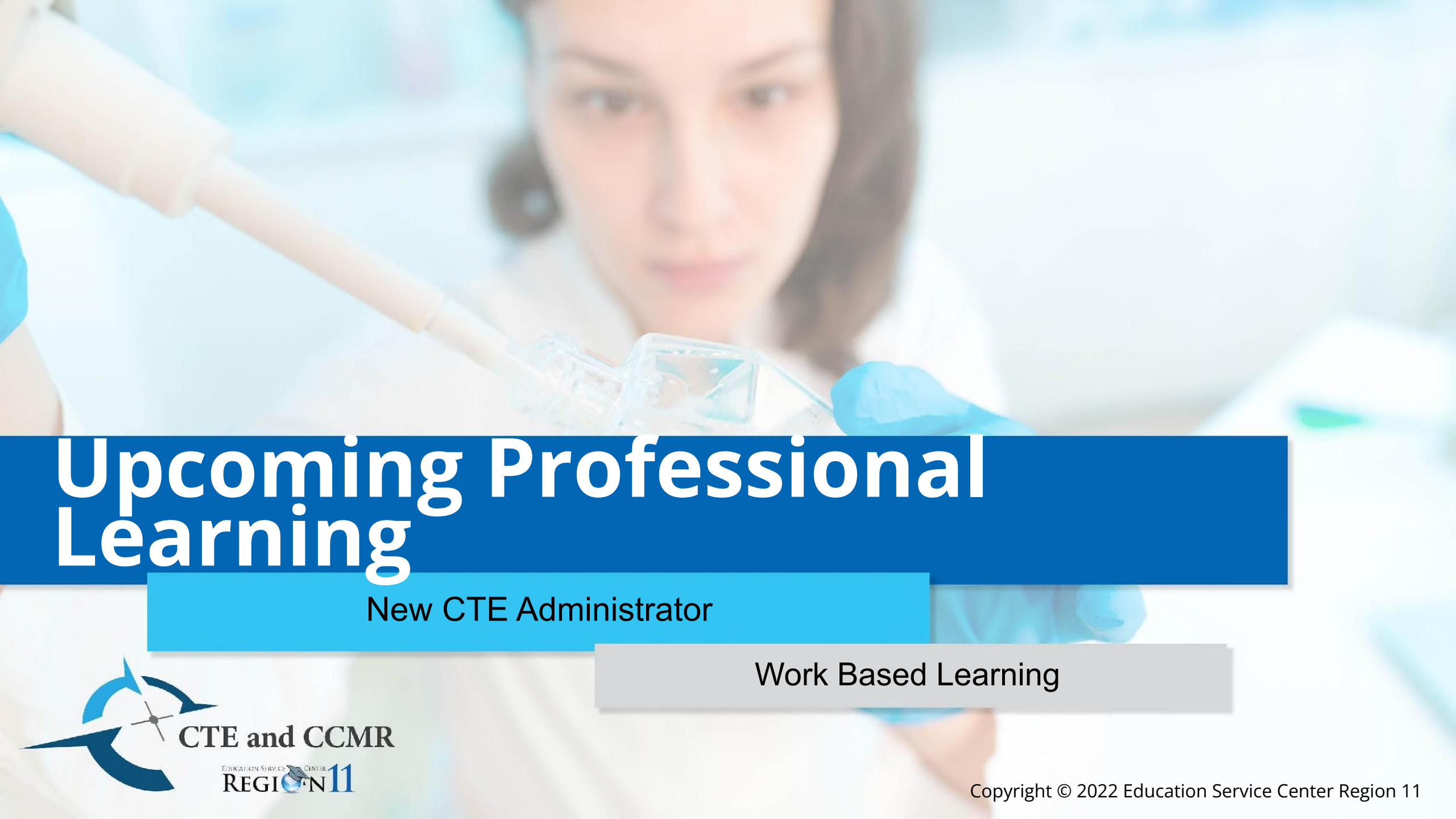


CTE Leadership Think Tank!

Would you be interested in joining structured and facilitated Career & Technical Education Leadership Think Tanks built throughout the year? These 2 hour long (1:30-3:30) would follow specific CTE/CCMR Leadership Meetings. Registration links to come!

Communicate your interest here:
<https://forms.gle/ZRoRsYrtUdbjzdz66>





Upcoming Professional Learning

New CTE Administrator

Work Based Learning



New CTE Administrator

Data Driven Decision Making
August 30, 2022

CTE Resources
September 20, 2022



Work Based Learning

Work Based Learning for
Teachers & CTE Leaders
September 6, 2022



SPACE IS LIMITED



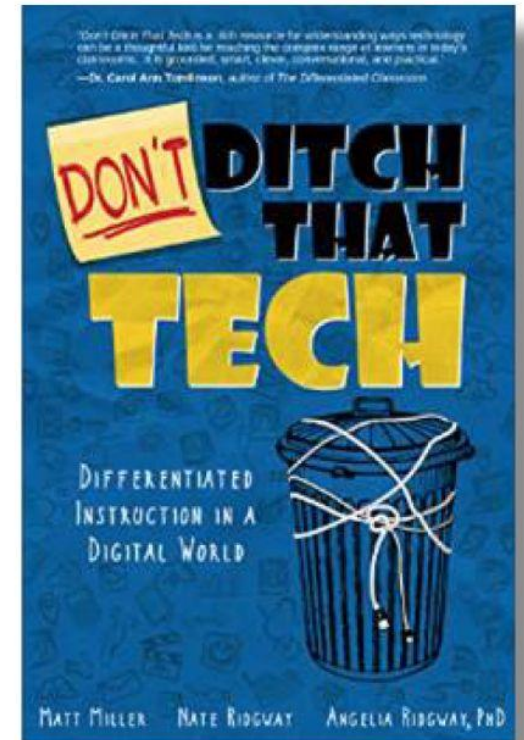
Don't Ditch That Tech

with Matt Miller
for CTE Teachers

August 31, 2022

9:00 a.m. – 3:30 p.m.

Face-to-face workshop at ESC Region 11
FREE for CTE teachers



To register, visit www.esc11.net
and click on "Register."



EDUCATION SERVICE CENTER
REGION 11
1451 S. Cherry Lane, White Settlement, TX 76108

Bell Vertical Robotics



Contact us

BellVRC@roboticseducation.org
roboticseducation.org/bell



About Bell

We're more than aviation experts, we're pioneers. We challenge what's possible. From breaking the sound barrier to developing the tiltrotor, we've re-imagined the experience of flight for more than 85 years. Today, we're redefining what flight is capable of with our revolutionary commercial and military helicopters, tiltrotors and unmanned aerial vehicle designs.

Through the Bell Advanced Vertical Robotics Competition, we are focused on inspiring the next generation of engineers and entrepreneurs who will define the future of vertical flight.

About REC Foundation

The Robotics Education & Competition (REC) Foundation is a US-registered 501(c)(3) non-profit organization that creates the future workforce by engaging today's students in hands on STEM learning through affordable, sustainable, and accessible robotics education programs.

We see a future where all students design and innovate as part of a team, experience failure, persevere and embrace STEM. These lifelong learners emerge confident in their ability to make the world a better place.

IT'S TIME FOR ROBOTICS TO GO VERTICAL!

Compete in the Bell Advanced Vertical Robotics
Competition 2022 Firefighting Challenge.
Presented by the REC Foundation.



©2022 Robotics Education & Competition Foundation. All rights reserved.
All trademarks are the property of their respective owners. REV052322

Kickoff & Competition Reveal

August 27th

Click on image for detailed flyer

Virtual CTE Teacher Professional Learning Network

- Link to Specific Career Cluster Registration:
 - <https://registration.esc11.net/catalog/all/subject/17>

Do you have questions about strengthening your CTE Programs of Study?
Do you have wisdom and experience to share?



Join us for the

2022-2023

Career and Technical Educators Professional Learning Network

These every-other-month convenings by unique CTE Career Clusters will:

- Create a strengthened unit of professional educators in each CTE Career Cluster and CTE Program of Study for enriched fellowship, professional learning, and networking
- Cultivate a place for all CTE teachers, no matter your years of service
- Consult with business and industry partners
- Capitalize on CTE resources through document and conversation sharing

Register at <https://bit.ly/3QJpfEN>.

For more information, contact Chelsea Reeves at creeves@esc11.net or 817-740-7654 or Lindsay Lindeman at llindeman@esc11.net or 817-740-7533.



CTE REGIONAL INDUSTRY ADVISORY BOARD



Join ESC Region 11 and connect with more than 100 local education agencies by serving as a member of the CTE Regional Industry Advisory Board. This mutually beneficial partnership will strengthen current and future CTE student opportunities, provide at least twice-yearly networking convenings, and construct a pipeline connecting education and industry leaders.

If interested in serving in this capacity, contact Lisa Harrison at lharrison@esc11.net or Chelsea Reeves at creeves@esc11.net.

FOR MORE INFORMATION ABOUT OUR CTE PROGRAM:



ESC REGION 11
CTE
REGISTRATION



ESC REGION 11
CTE WEBSITE



CTE Regional Industry Advisory Board

- Connect with Industry Partners representing each Career Cluster
- Network to provide student opportunity, teacher support, and a strengthened school to work pipeline
- Industry Partners include: Amazon, Bell Helicopter, Hillwood, Meta, Medical City, and more.



MARK YOUR CALENDAR!

REGISTER TODAY!

2022 Pathways to Texas CCMR

October 26 - 27, 2022 • 9:00 a.m. - 3:30 p.m.

CCMR and CTE administrators, SPED administrators, counselors, college advisors, higher education staff, and industry partners are invited to join us for two days of learning and collaboration geared toward educating students academically, socially, emotionally, and preparing students for post-secondary readiness.

For more information, contact
Lindsay Lindeman at llindeman@esc11.net
or 817-740-7533.



To register, visit www.esc11.net and click on "Register."

[Registration Link](#)



Thank you!

Lisa Harrison
lharrison@esc11.net
817-740-7527

Chelsea Reeves
creeves@esc11.net
817-740-7654



ESC Region 11 CTE [Website](#)

[CCMR/CTE Customer Satisfaction Survey](#)

Copyright Notice: Limited Consent

ESC Region 11 grants permission to attendees of this session to reproduce and distribute designated resources and materials provided during the presentation.